

PAPER • OPEN ACCESS

## Effects of slopes on the stormwater attenuation performance in extensive green roof

To cite this article: M F Chow *et al* 2018 *IOP Conf. Ser.: Earth Environ. Sci.* **164** 012029

View the [article online](#) for updates and enhancements.

### Related content

- [A Review on the Controlling Factors that Affecting the Stormwater Retention Performance of Green Roof](#)  
M F Chow, M F Abu Bakar and L M Sidek
- [Green roof seasonal variation: comparison of the hydrologic behavior of a thick and a thin extensive system in New York City](#)  
R M Elliott, R A Gibson, T B Carson et al.
- [Hydrological performance of extensive green roofs in New York City: observations and multi-year modeling of three full-scale systems](#)  
T B Carson, D E Marasco, P J Culligan et al.

# Effects of slopes on the stormwater attenuation performance in extensive green roof

M F Chow<sup>1\*</sup>, M F Abu Bakar<sup>2</sup>, M H Mohd Razali<sup>2</sup>

<sup>1</sup>Center for Sustainable Technology and Environment (CSTEN), Universiti Tenaga Nasional, 43000 Kajang, Selangor, Malaysia.

<sup>2</sup>Department of Civil Engineering, Universiti Tenaga Nasional, 43000 Kajang, Selangor, Malaysia.

\*Corresponding author email: mingfaichow12345@gmail.com

**Abstract.** This study is aimed to determine the effects of slope on stormwater retention and peak flow attenuation performances in extensive green roof in Malaysia. One green roof test bed with dimensions of 2.0 m (length) x 1 m (width) x 0.2 m (height) was constructed in Universiti Tenaga Nasional. The substrate layer was fixed as 130 mm depth and placed on top of the filter fabric and drainage layers. The green roof test bed was planted with *Portulaca Grandiflora* (sedum species) as the native plant in Malaysia. Different slopes (0 °, 2 °, 5 ° and 7 °) of green roof test bed were tested in this study for its stormwater retention and peak flow attenuation performances. The results show that stormwater retention percentages are ranged from 56.9% to 52.3%. The stormwater retention percentages are decreased as slope increased in this study. Flat slope showed the longest observed time of peak flow while the 7 ° slope has the shortest observed time of peak flow. This finding suggests that slope has a significant impact to the stormwater retention and peak flow attenuation performances in extensive green roof.

## 1. Introduction

The urbanization process is taking place rapidly in the recent decades and the urban city population growth is expected to reach 85% by 2030 [1]. The impervious surfaces such as street, building and roof have changed the hydrological processes in the natural catchment which cause the increased of runoff volume, decreased evapotranspiration and ground water recharges, as well as enhancing river channel erosion [2,3,4,5]. As the impervious surfaces are increasing, more frequent flash floods will be happening in urban city. Rooftop and road systems commonly account for 80% of all the impervious surfaces in the urban area [6]. Rooftop runoff poses a greater threat to water quantity in urban catchment than rural catchment as the runoff can enter the receiving water bodies more rapidly due to the greater connectivity of roofs to gutters and drainages.

Green roof have been introduced as a sustainable stormwater management technology to control the urban stormwater runoff. Green roofs have been widely implemented in many temperate countries like European countries, USA and Canada. Numerous studies had proved that green roofs can effectively reduce the peak flow and extend the delay of stormwater runoff [7,8,9,10,11,12,13,14,15,16]. The runoff can be delayed between 10 min [13,17,18] to 4 hours [19] from the green roofs if compared to conventional roofs of which the runoff is nearly instantaneous. Carter and Rasmussen [20] observed 57% of peak flow in a vegetated roof was delayed up to 10



minutes as compared with that from a conventional roof. Liu [7] found that runoff from the green roof was reduced to 0.5 mm/h when the initial rainfall was 2.8 mm/h. Meanwhile, Moran et al. [9] in North Carolina, USA found 57% to 87% reduction in flow rates from a green roof. Fassman-Beck et al. [21] monitored four green roofs (depth 5-15 cm) in New Zealand and observed 73% to 89% of peak flow reduction compared to control roofs. Alfredo et al. [22] also found 22% to 70% reduction in peak discharges from green roofs compared to the control roof.

Though green roofs is widely implemented in many developed countries, climatic variations between the temperate and tropical regions have hindered the direct transferal of roof designs, substrate specifications, and plant species. Therefore, it is important to carry out local study on the green roof system with regards to its suitable plant species, substrate composition and roof designs [23]. Choosing native plants in green roof systems will provide many benefits such as better adaption to local condition, require less watering, low maintenance, increase biodiversity as well as more aesthetically pleasing than non-native plant. The roof design is also very important for tropical countries like Malaysia as it subjected to short and frequent high intensity storm events. The research related to the green roof systems is still lacking in Malaysia. Therefore, this study is carried out to determine the effects of slope on stormwater retention and peak flow attenuation performances in extensive green roof in Malaysia.

## 2. Methodology

### 2.1. Setup of experimental green roof

This experiment was conducted at the civil engineering laboratory in Universiti Tenaga Nasional (UNITEN). The dimension of green roof test bed is 2.0 m length x 1 m width x 0.2 m height, and installed at a height of 1m above the ground level. Figure 1 shows the experimental green roof test beds that established in this study.



**Fig. 1.** Experimental green roof test beds that established in this study.

The typical potting soil was chosen in this study for investigating its stormwater retention performance and attenuation of peak flow. The choice of this substrate type was based on its availability and popularity as common horticultural substrate used by the local landscaping industry. The substrate layer was fixed as 130 mm depth and placed on top of the filter fabric and drainage layers (Fig. 1). The green roof test bed was planted with *Portulaca Grandiflora* (sedum) as shown in Fig. 1. All surface areas inside the green roof test bed were ensured that 100% covered by the

respective plant. Different slopes (0 °, 2 °, 5 ° and 7 °) of green roof test bed were tested in this study for its stormwater retention and peak flow attenuation performances.

## 2.2. Data collection and analysis

An artificial rainfall simulator was installed at 0.5 m height above the green roof test bed. The simulated rainfall was set to run for 5 minutes duration and time was recorded after the rainfall initiated. A total of 400 liter of simulated rainfall volume was poured onto the green roof test bed during the experiment. Once the first runoff is observed, time was recorded for each experiment. The stormwater runoff that discharged from drainage layer within the green roof test beds was drained out by using a PVC pipe. A runoff harvesting tank was placed under the green roof test beds and connected to the PVC pipe in order to collect the runoff from green roofs. The water volume in the runoff harvesting tank was measured and time of each measurement was collected simultaneously during the simulated rainfall period. The measured runoff volume and time were converted to runoff flow rate in order to plot the hydrograph for each experiment.



**Fig. 2.** Simulated rainfall (a) and measurement of flow rate (b) during the experiment.

The stormwater retention percentage of green roof is generally calculated by dividing the difference between rainfall and runoff depths with the total rainfall depth as shown in Equation 1.

$$\text{Retention (\%)} = \frac{\text{Rainfall (mm)} - \text{Runoff (mm)}}{\text{Rainfall (mm)}} \times 100\% \quad \text{Equation 1}$$

The curve number (CN) is calculated for every green roof test bed by using Equation (2):

$$CN = \frac{25400}{254 + S} \quad \text{Equation 2}$$

Where, S = rainwater retention in soil (mm)

The hydrograph for each experiment with respect to different slope values (0 °, 2 °, 5 ° and 7 °) was plotted in order to determine the peak flow rate and time to peak flow.

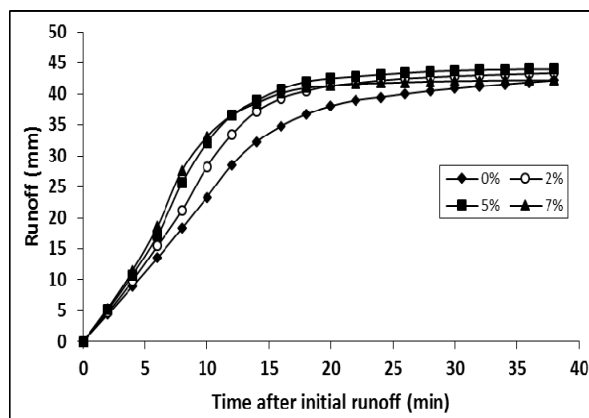
## 3. Results and discussions

The effects of slope on the stormwater retention performance and delay of peak flow have been investigated during a 3 month study in Universiti Tenaga Nasional. The stormwater retention percentage is calculated for every storm event monitored in each green roof configuration. The stormwater retention percentages are ranged from 56.9% to 52.3%. The highest stormwater retention

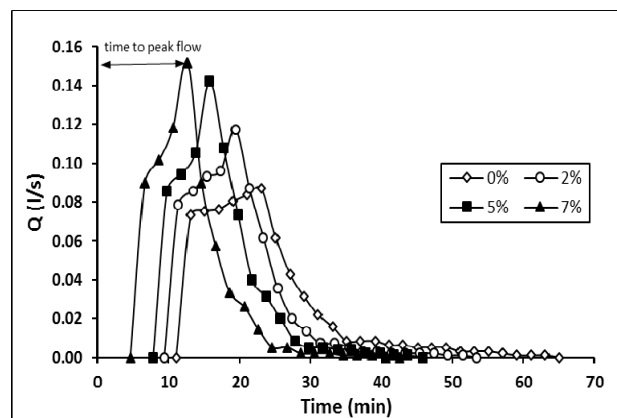
percentage is observed at the 2 ° slope (56.9%) while the least at the 7 ° slope (52.3%). It is observed that stormwater retention percentages are decreased as slope increased in this study. The cumulative runoff depths for green roof test beds with different slope values are presented in Fig. 3. The curve number was also calculated for each green roof slope in the study. The curve numbers for 0 °, 2 °, 5 ° and 7 ° slopes are 81.7, 81.8, 82.0 and 82.9, respectively. The curve number started to show significant different at the 7 ° slope. All of these curve numbers are lower than a conventional roof curve number of 98. Using these curve numbers in the equation  $CN = 25,400 / (254 + S)$  and solving for potential retention (S) we find that S ranges from 52.3 mm to 56.9 mm. These findings are greater than that reported by Carter and Rasmussen [20] who found a curve number of 86 ( $S = 40.5$  mm) for a green roof with <2% slope and 7.62 cm of substrate. This may be due to difference in substrate depth, antecedent substrate moisture status and rainfall pattern [24]. The hydrographs for every green roof configurations are shown in Fig. 4. Great variations were observed for the time of peak flow in green roof with respect to different slopes. Flat slope (0 °) showed the longest observed time of peak flow. Meanwhile, the 7 ° slope exhibited 45% faster than the observed time of peak flow in flat slope. The magnitude of peak flow for 7 ° slope is 1.75 time greater than the peak flow in flat slope. This finding suggests that slope has a significant impact to the attenuation of peak flow in extensive green roof.

**Table 1.** Water retention percentage, curve number and observed times of runoff

Slope (°)	Water retention percentage (%)	Curve number	Observed time	
			First runoff	Peak flow
0	56.9	81.7	11 min 5 s	23 min 5 s
2	56.4	81.8	9 min 23 s	19 min 23 s
5	55.9	82.0	7 min 46 s	15 min 46 s
7	52.3	82.9	4 min 37 s	12 min 37 s



**Fig. 3.** Cumulative runoff depths for green roof test beds with different slope values



**Fig. 4.** Hydrographs for green roof test beds with different slope values

#### 4. Conclusions

This study has investigated the effects of slope on the stormwater retention performance and delay time of peak flow in extensive green roofs. The results showed that green roofs with 0 ° and 7 ° slopes exhibited the highest and lowest stormwater retention percentages which recorded 56.9% and 52.3%, respectively. Flat slope showed the longest observed time of peak flow while the 7 ° slope has the shortest observed time of peak flow. The magnitude of peak flow for 7 ° slope is 1.75 time greater than



the peak flow in flat slope. This finding suggests that slope has a significant impact to the stormwater retention and peak flow attenuation performances in extensive green roof.

## References

- [1] United Nations 2002. World Urbanization Prospects: The 2001 Revision. United Nations, New York.
- [2] Stone Jr., B., 2004, Paving over paradise: how land use regulations promote residential imperviousness, *Landscape and Urban Planning* **69**:101–113.
- [3] Roy, A. H., M. C. Freeman, B. J. Freeman, S. J. Wenger, W. E. Ensign, and J. L. Meyer, 2005. Investigating hydrological alteration as a mechanism of fish assemblage shifts in urbanizing streams. *Journal of the North American Benthological Society*. **24**:656–678.
- [4] Arnold, C.L., Gibbons, C.J. 1996. Impervious Surface Coverage: The Emergence of a Key environmental Indicator. *Journal of the American Planning Association*. 62(2): 243-258.
- [5] Walsh, C. J., T. D. Fletcher, and A. R. Ladson, 2005, Stream restoration in urban catchments through redesigning stormwater systems: Looking to the catchment to save the stream. *Journal of the North American Benthological Society* **24**:690–705.
- [6] Slonecker, E. T., and Tilley, J. S., 2004. An evaluation of the individual components and accuracies associated with the determination of impervious area. *GIScience and Remote Sensing*. **41**(2): 165-184.
- [7] Liu, K., 2003. *Engineering performance of rooftop garden through field evaluation*. Proc. Of the 18<sup>th</sup> International Convention of the Roof Consultant Institute. 93-103.
- [8] DeNardo, J.C., A.R. Jarrett, H.B. Manbeck, J. Beattie, and R. D. Berghage, 2004. Stormwater Mitigation and Surface Temperature Reduction by Green Roofs. *Transactions of ASAE (In Press)*. **48**(4): 1491-1496.
- [9] Moran, A., Hunt, B., Smith, J., 2005. Hydrological and water quality performance from green roofs in Goldsboro and Raleigh, North Carolina. In: Green Roofs for Healthy Cities Conference, Washington, DC,
- [10] Bengtsson, L., 2005. Peak flows from thin sedum-moss roof, *Nordic Hydrology*, **36**:269-280.
- [11] Bengtsson, L., Grahn, L., Olsson, J., 2005. Hydrological function of a thin extensive green roof in southern Sweden. *Nord. Hydrol.*, **36**(3):259–268.
- [12] Villarreal, E. L., and L. Bengtsson, 2005. Response of a sedum green-roof to individual rain events. *Ecological Engineering* **25**(1):1-7.
- [13] VanWoert, N. D., Rowe, D. B., Andresen, J. A., Rugh, C. L., Fernandez, R. T., Xia, L., 2005. Green roof stormwater retention: Effects of roof surface, slope, and media depth. *Journal Environment Quality* **34**:1036-1044.
- [14] Chow, M. F., M., Abu Bakar, M. F., Roslan, M. A. A., Fadzailah, F. A. Idrus, M. F. Z., Ismail, N. F., Sidek, L. M., Basri, H., 2015 Hydrological Performance of Native Plant Species within Extensive Green Roof System in Malaysia. *ARPJ Journal of Engineering and Applied Sciences*. **10**(15): 1819-6608.
- [15] Chow, M. F., Abu Bakar, M.F. 2016. A review of the development and challenges of green roof systems in Malaysia. *International journal of Architecture and Environmental Engineering*. 10(1): 16-20.
- [16] Kok, K.H.; Sidek, L.M.; Chow, M.F.; Zainal Abidin, M.R.; Basri, H.; Hayder, G. 2016. Evaluation of green roof performances for urban stormwater quantity and quality controls. *Int. J. River Basin Manag.* 14, 1–7.
- [17] Simmons, M.T., Gardiner, B., Windhager, S., Tinsley, J., 2008. Green roofs are not created equal: the hydrologic and thermal performance of six different extensive green roofs and reflective and non-reflective roofs in a sub-tropical climate, *Urban Ecosystems*. **11**:339–348.
- [18] Chow, M.F., Abu Bakar, M.F., Sidek, L.M., Basri, H 2017 *Journal of Engineering and Applied Sciences* 12(21) 5379-5383.
- [19] Moran, A., Hunt, B., and Jennings, G., 2004, A North Carolina field study to evaluate green roof quantity, runoff quality, and plant growth. *2nd Greening Rooftops for Sustainable Communities Conf.*, Portland, 2-4 June, pp. 446-460.
- [20] Carter, T.L. and Rasmussen, T.C., 2006. Hydrologic behavior of vegetated roofs. *Journal of the American Water Resources Association*, **42**(5):1261-1274.
- [21] Fassman-Beck, E., Voyde, E., Simcock, R., and Hong, Y. S., 2013. 4 living roofs in 3 locations: does configuration affect runoff mitigation? *J. Hydrol.* **490**:11–20.

- [22] Alfredo, K., Montalto, F., and Goldstein, A., 2010. Observed and modelled performances of prototype green roof test plots subjected to simulated low- and high-intensity precipitations in a laboratory experiment. *J. Hydrol. Eng.* **15**(6):444–457.
- [23] Williams, N. S. G., Raynor, K. J., 2010. Green roofs for wide brown land: opportunities and barriers for rooftop greening in Australia. *Urban forest. Urban Green.* **9**(3): 245-251.
- [24] Getter, K.L., Rowe, D.B., Andresen, J.A. (2007). *Quantifying the effect of slope on extensive green roof stormwater retention. Ecological Engineering.* **31**: 225-231.

### Acknowledgments

The authors would like to thank Ministry of Higher Education, Malaysia (MOHE) for providing the research grant (Vot no: 20140130FRGS). We would like to acknowledge the BOLD Research Grant provided by Universiti Tenaga Nasional (Project No. 10289176/B/9/2017/50) and TNB Seeding Grant provided by Tenaga Nasional Berhad (Project No: U-TG-RD-17-06).